

CS520 Web Programming

Full Text Search

Chengyu Sun
California State University, Los Angeles

Search Text

- ◆ Web search
- ◆ Desktop search
- ◆ Applications
 - Search posts in a bulletin board
 - Search product descriptions at an online retailer
 - ...

Database Query

- ◆ Find the posts regarding "SSHD login errors".

```
select * from posts
  where content like '%SSHD login errors%';
```

Here are the steps to take to fix the SSHD login errors:
...

Please help! I got SSHD login errors!

Problems with Database Queries

Please help! I got an error when I tried to login through SSHD!

There a problem recently discovered regarding SSHD and login. The error message is usually ...

The solution for sshd/login errors: ...

- ◆ And how about performance??

Full Text Search (FTS)

- ◆ More formally known as Information Retrieval (IR)
- ◆ Search LARGE amount of textual data (*documents*)

Characteristics of FTS

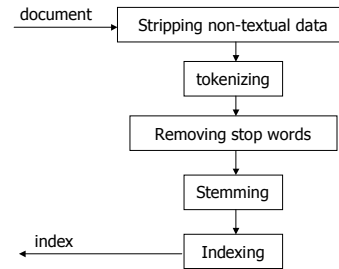
- ◆ Vs. Databases
 - Relevancy ranking
 - "Fuzzy" query processing

Accuracy of FTS

$$\text{Precision} = \frac{\text{\# of relevant documents retrieved}}{\text{\# of documents retrieved}}$$

$$\text{Recall} = \frac{\text{\# of relevant documents retrieved}}{\text{\# of relevant documents}}$$

Journey of a Document



Document

◆ Original

```
<html>
<body>
<p>The solution for
sshd/login errors:
...</p>
</body>
</html>
```

◆ Text-only

```
The solution for
sshd/login errors:
...
```

Tokenizing

```
[the] [solution] [for] [sshd] [login] [errors]
...
```

Chinese Text Example

Text: 今天天气不错。

Unigram:

[今][天][天][气][不][错]

Bigram:

[今天][天天][天气][气不][不错]

Grammar-based:

[今天][天气][不错]

Stop Words

◆ Words that do not help in search and retrieval

- Function words: a, an, and, the, of, for ...

◆ After stop words removal:

```
[the] [solution] [for] [sshd] [login] [errors]
...
```

Problem of stop word removal??

Stemming

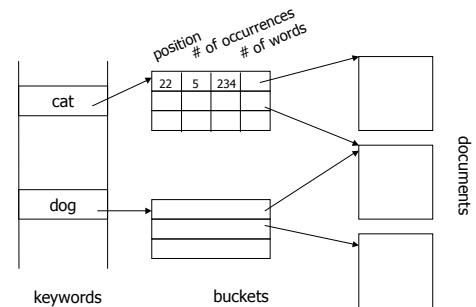
◆ Reduce a word to its stem or root form.

◆ Examples:

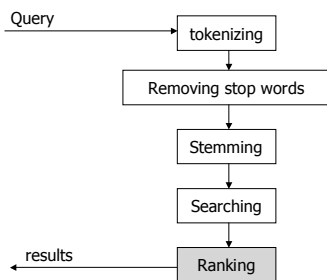
connection, connections
connected, connecting → connect
connective

[solution] [sshd] [login] [errors] → [solve] [sshd] [login] [error]
...

Inverted Index



Query Processing



Ranking

◆ How well the document matches the query

- E.g. weighted vector distance

◆ How "important" the document is

- E.g. based on ratings, citations, and links

FTS Implementations

◆ Databases

- MySQL: MyISAM tables only
- PostgreSQL (since 8.3)
- Oracle, DB2, MS SQL Server, ...

◆ Standard-alone IR libraries

- Lucene, Egothor, Xapian, MG4J, ...

FTS from the Perspective of Application Developers

◆ Prepare data

◆ Create query

◆ Display result

◆ (Index)

◆ (Ranking)

Lucene Overview

- ◆ <http://lucene.apache.org/>
- ◆ Originally developed by Doug Cutting
- ◆ THE full text search solution for Java applications
- ◆ Handles text only – needs external converters to convert other document types to text
- ◆ Java API - http://lucene.apache.org/java/3_1_0/api/core/index.html

Example 1: Index Text Files

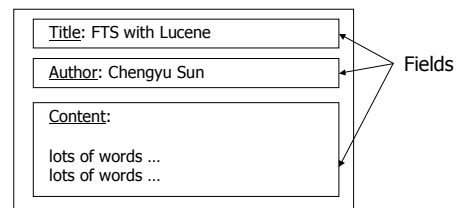
- ◆ Directory
- ◆ Document and Field
- ◆ Analyzer
- ◆ IndexWriter

Directory

- ◆ A place where the index files will be stored
- ◆ `FSDirectory` – file system directory
- ◆ `RAMDirectory` – virtual directory in memory

Document

- ◆ A document consists of a number of user-defined fields



Types of Fields

- ◆ Indexed – whether the field is indexed
 - Tokenized
 - Untokenized
- ◆ Stored – whether the original text is stored together with the index

Common Usage of Field Types

Field	Tokenized	Indexed	Stored
String	Y	Y	Y
Large text file	Y	Y	
ID, people's name, date		Y	Y
Non-searchable data			Y

Analyzer

- ◆ Pre-processing the document or query text – tokenization, stop words removal, stemming ...
- ◆ Lucene built-in analyzers
 - WhitespaceAnalyzer, SimpleAnalyzer, StopAnalyzer
 - StandardAnalyzer
 - Grammar-based
 - Recognize special tokens such as email addresses
 - Handle CJK text

IndexWriter

- ◆ addDocument(Document)
- ◆ close()
- ◆ optimize()

Example 2: Search

- ◆ Query and QueryParser
- ◆ IndexSearcher
- ◆ Hits
- ◆ Document (again)

Queries

full text search
+full +text search
+full +text -search
+title:"text search"
+(title:full title:text) -author:"john doe"

IndexSearcher

- ◆ search(Query)
- ◆ close()

Hits

- ◆ A ranked list of documents used to hold search results
- ◆ Methods
 - Document doc(int n)
 - int id(int n)
 - int length()
 - float score(int n) – normalized score

Factors in Lucene Score

- ◆ # of times a term appears in a document
- ◆ # of documents that contain the term
- ◆ # of query terms found
- ◆ length of a field
- ◆ boost factor - field and/or document
- ◆ query normalizing factor – does not affect ranking

See the API documentation for the Similarity class.

Document (again)

- ◆ Methods to retrieve data stored in the document
 - String get(String name)
 - Field getField(String name)

Handle Rich Text Documents

- ◆ HTML
 - NekoHTML
- ◆ PDF
 - PDFBox
- ◆ MS Word
 - POI
- ◆ More at Lucence FAQ -
<http://wiki.apache.org/jakarta-lucene/LuceneFAQ>

Further Readings

- ◆ *Lucene in Action* by Otis Gospodnetic and Erik Hatcher

FTS in PostgreSQL

- ◆ Since 8.3
 - tsearch/tsearch2 module before 8.3
- ◆ <http://www.postgresql.org/docs/8.4/interactive/textsearch.html>

Sample Schema

```
create table messages (  
  id          serial primary key,  
  subject    varchar(4092),  
  content    text,  
  author     varchar(255)  
);
```

Basic Data Types and Functions

◆ Data types

- tsvector
- tsquery

◆ Functions

- to_tsvector
- to_tsquery
- plainto_tsquery

Query Syntax

plainto_tsquery	to_tsquery
full text search	full & text & search
↓	full & text search
full & text & search	full & !text search
	(! full text) & search

The Match Operator @@

- ◆ tsvector @@ tsquery
- ◆ tsquery @@ tsvector
- ◆ text @@ tsquery
 - to_tsvector(text) @@ tsquery
- ◆ text @@ text
 - to_tsvector(text) @@ plainto_tsquery(text)

Note that there is no tsquery @@ text.

Query Examples

- ◆ Find the messages that contain "computer programs" in the content
- ◆ Find the messages that contain "computer programs" in either the content or the subject

Create an Index on Text Column(s)

```
create index messages_content_index
on messages
using gin(to_tsvector('english',content));
```

- ◆ Expression (function) index
- ◆ The *language* parameter is required in both index construction and query

Use a Separate Column for Text Search

- ◆ Create a tsvector column
- ◆ Use a trigger to update the column

Create an Index on the tsvector Column

```
create index messages_tsv_index
on messages
using gin (tsv);
```

- ◆ The *language* parameter is no longer required

More Functions

- ◆ `setweight (tsvector, "char")`
 - A: 1.0
 - B: 0.4
 - C: 0.2
 - D: 0.1
- ◆ `ts_rank (tsvector, tsquery)`
- ◆ `ts_headline (text, tsquery)`

Function Examples

- ◆ Set the weight of *subject* to be "A" and the weight of *content* to be "D"
- ◆ List the results by their relevancy scores and highlight the query terms in the results

Using Native SQL in Hibernate

- ◆ <http://docs.jboss.org/hibernate/core/3.6/reference/en-US/html/queriesql.html>

- ◆ Example:

```
SQLQuery query = session.createSQLQuery("select * from messages");
query.addEntity( Message.class );
List messags = query.list();
```

Named Query ...

In Hibernate mapping file:

```
<sql-query name="message.search">
  <return class="Message" />
  <![CDATA[
    select * from messages
    where tsv @@ plainto_tsquery(?)
  ]]>
</sql-query>
```

... Named Query

In DAO code:

```
public List searchMessages( String query )
{
  return getHibernateTemplate()
    .findByNameQuery("message.search", query);
}
```


Search Forum Posts in CSNS

- ◆ csns-create.sql
- ◆ Post.java
- ◆ Post.hbm.xml
- ◆ PostDao.java
- ◆ PostDaoImpl.java

FTS in Databases vs. Standalone Libraries

- ◆ Pros??
- ◆ Cons??